

2nd-3rd GRADE ART LESSONS

Attached please find various drawing guides and drawing paper. Please choose one to complete during our extended school closure. After you have drawn the subject matter, have fun and get creative with the background! This may be just a pencil drawing, but you are encouraged to add color with crayons or markers as well. I also want to encourage you to keep this packet, it will give you many fun activities and drawing challenges to complete any time you would like!

Sadly, we will need to postpone our annual art fair this year. This will include the recorder concert that was to be performed at the closing of the awards ceremony. We will let you know when another date can be set.

Please contact me if you have any questions,

Mrs. Torello

Sherry.Torello@elsd.us

1



Start your dog drawing by drawing two bumps for the dog's ears.

2



Draw a sideways "U" out from the ears. Add a nose.

3



Add eyes and a mouth to the dog's head.

4



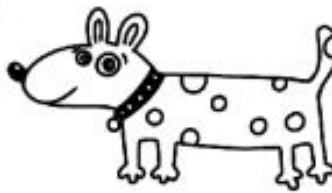
Draw a line from the dog's head back towards the tail. Add a tail.

5



Add the dog's four feet.

6



Add additional details such as a collar and spots.

DOG DRAWING GUIDE

1



Just above the bottom of the paper near the corners, trace two circles. The front circle can be smaller than the back circle.

2



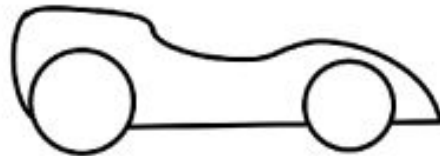
Connect the wheels with a horizontal line. Add a short horizontal line in front of the front wheel. Add a curved line behind the back tire.

3



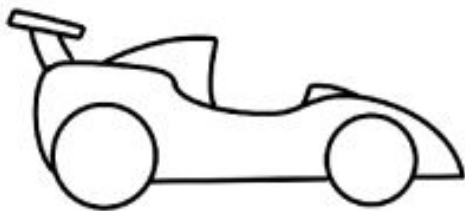
Draw a long shallow "smile" above and between the two wheels to create the driver's spot.

4



Connect the back of the car to the driver's spot. Draw a curve from the driver's spot down to the front of the car.

5



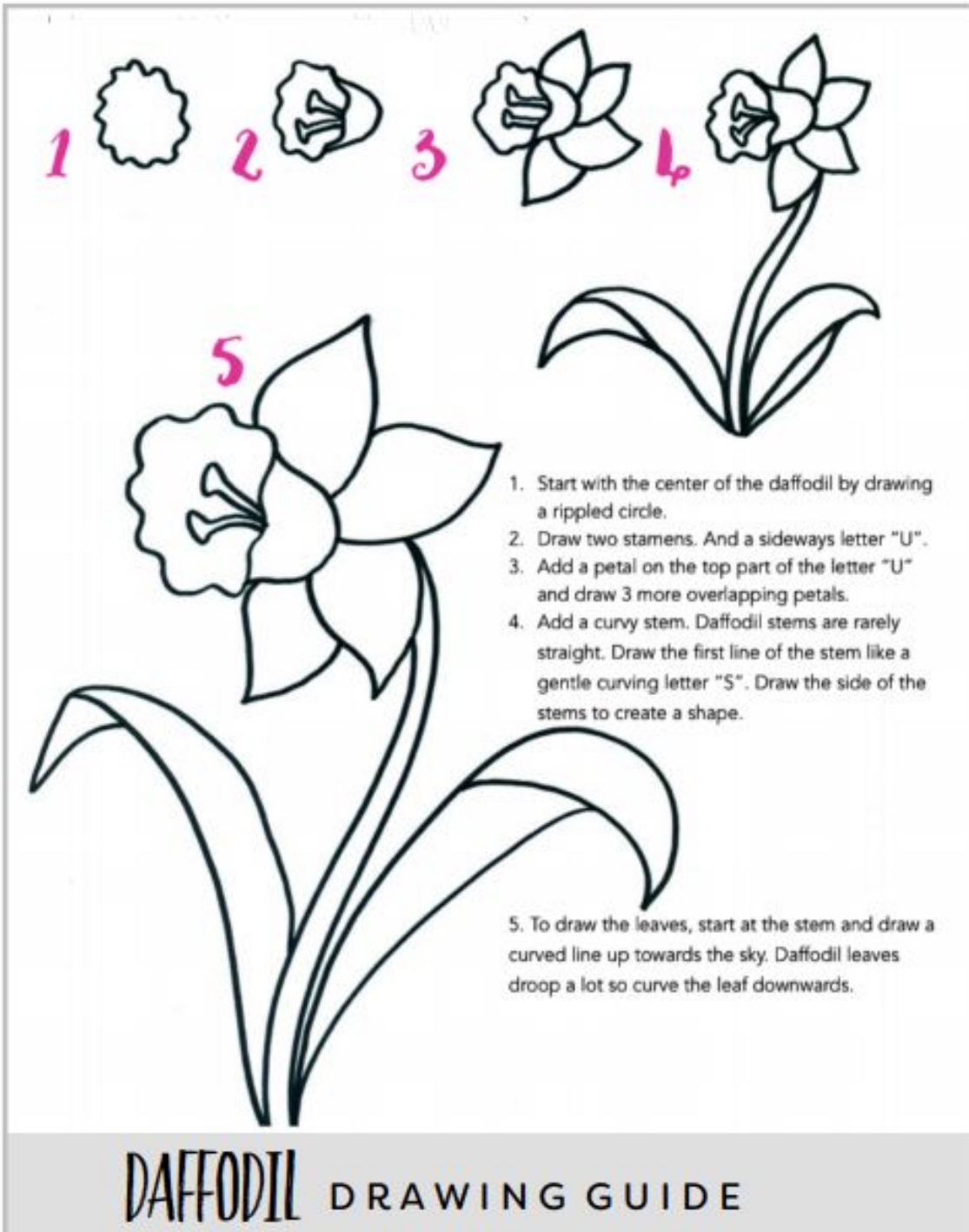
Add a spoiler to the back of the car. Draw a triangle towards the back of the driver's spot. Add a small triangle for the dashboard.

6



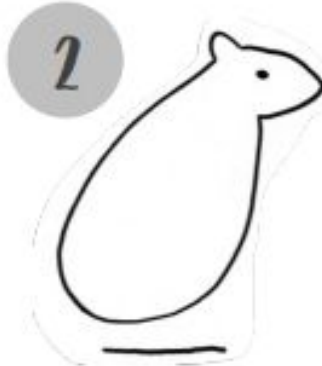
Add additional details such as a lights, hubcaps, a driver, #1 decal, stripes, etc.

RACE CAR DRAWING GUIDE

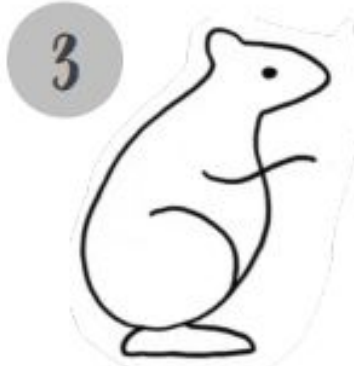




1 Draw a sideways "U" shape for the head. Add a bump for the ear. Add an eye.



2 For the body, draw a large "U" that starts at the ear and ends at the head. Add a line under the body.



3 Connect the line under the body with angled lines back towards the body to form the foot. Add a curved line for the arm and a backwards "C" for the leg.



4 Add a second curved line to the arm and connect the lines with a short bumpy line to form the claw. Draw a large tail by drawing a wavy line up from the body and curving it back down to the base of the tail. Add a second ear and spot details.

SQUIRREL DRAWING GUIDE